

San Ace DC

DC Fan

□ **40mm**
San Ace 40



"San Ace 40" CRA type, Counter Rotating Fan

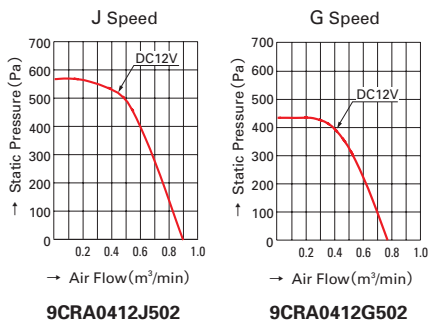
General Specifications

- MaterialFrame, Impeller:Plastics
- Life ExpectancyVaries for each model (Survival rate: 90% at 60°C, rated voltage,and continuously run in a free air state)
- Motor Protection SystemCurrent blocking function (with reverse polarity protection)
- Dielectric Strength50/60 Hz, 500VAC, 1 minute (between lead conductor and frame)
- Noise Measurement MethodMeasured at 1m from the air inlet
- Operating Temperature RangeVaries for each model (Non-condensing)
- Lead WireInlet ⊕red, ⊖black
.....Outlet ⊕orange, ⊖gray
- Mass90g

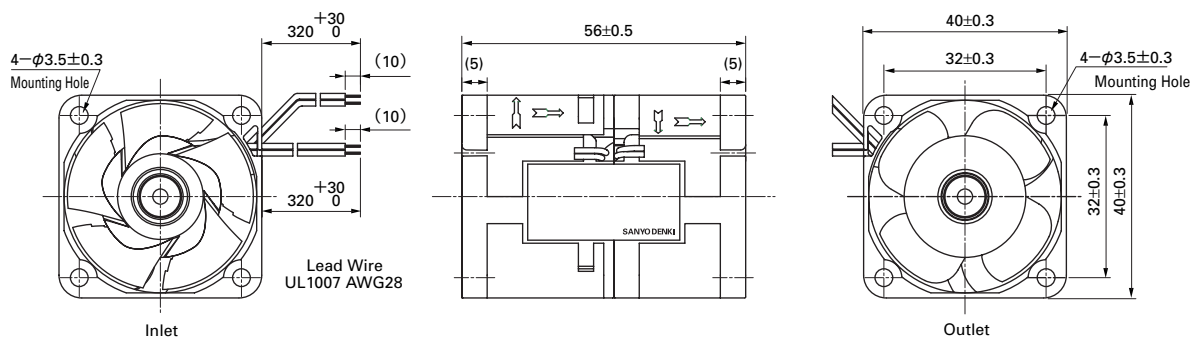
56mm thick Specifications

Model No	Rated Voltage (V)	Operating Voltage Range (V)	Rated Current (A)	Rated Input (W)	Rated Speed (min ⁻¹)		Air Flow (m ³ /min) (CFM)		Static Pressure (Pa) (inchH ₂ O)		Noise (dB [A])	Operating Temperature Range (°C)	Life Expectancy (h)
					Inlet	Outlet							
9CRA0412J502	12	10.8~13.2	1.4	16.8	15,800	12,200	0.90	31.8	570	2.29	62	-10 ~+70	40,000
9CRA0412G502			1.0	12.0	14,000	10,400	0.77	27.2	435	1.75			

Air Flow and Static Pressure Characteristics

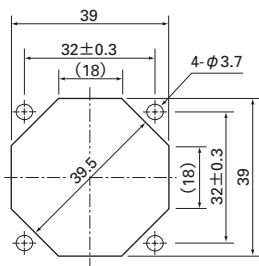


Dimensions (unit : mm)



Reference Dimension of Mounting Holes and Vent Opening (unit : mm)

Air Inlet Side · Air Outlet Side



40mm

Notice

- The products shown in the catalog are subject to Japanese Export Control Law. Diversion contrary to the law of exporting country is prohibited.
- To protect against electrolytic corrosion that may occur in locations with strong electromagnetic noise, we provide fans that are unaffected by electrolytic corrosion. Alternative measures to protect against electrolytic corrosion may include metallic finger guards or other metallic attachments. Please contact us for details.

SANYO DENKI